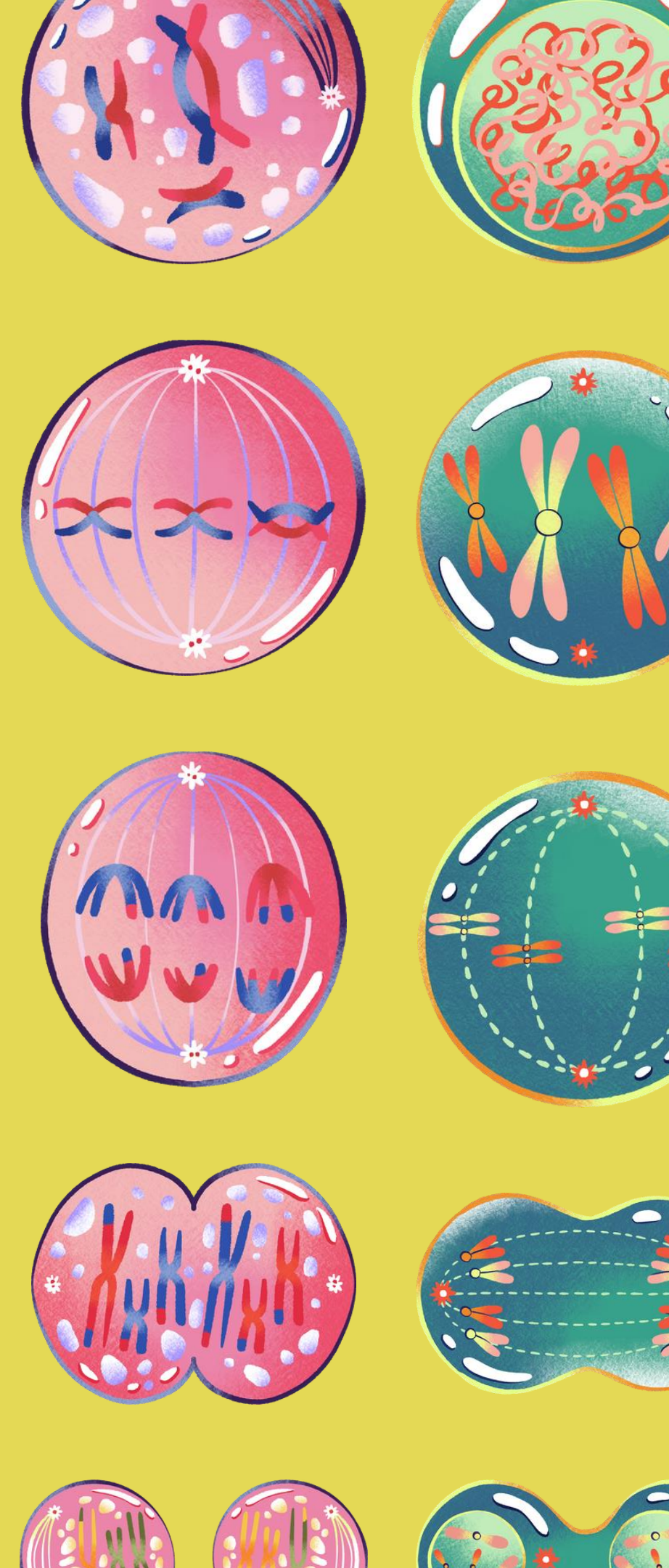




# Hypothesizing 2050

# Personalized Care and Enhancement

Small molecule delivery will be fully specific to the hierarchical organization of every eukaryotic cell, enabling precise, personalized treatments at the cellular level





# **P** **REPARATIVE** **MEDICINE**

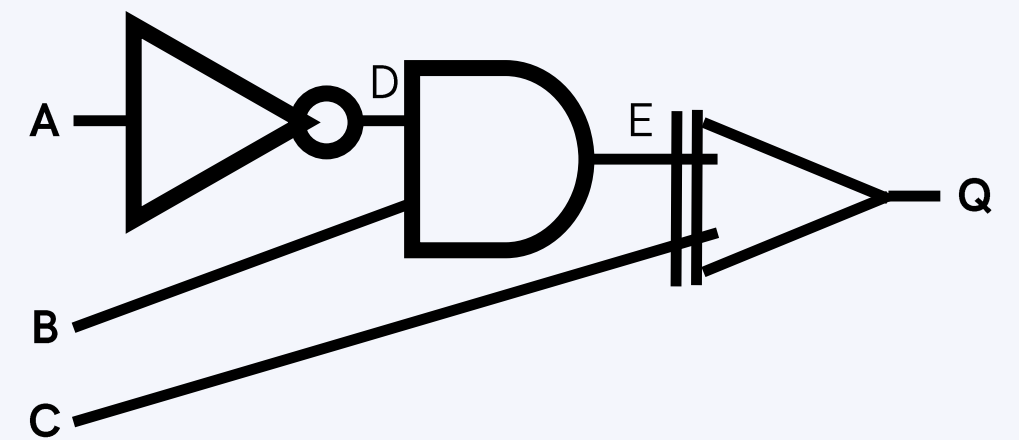


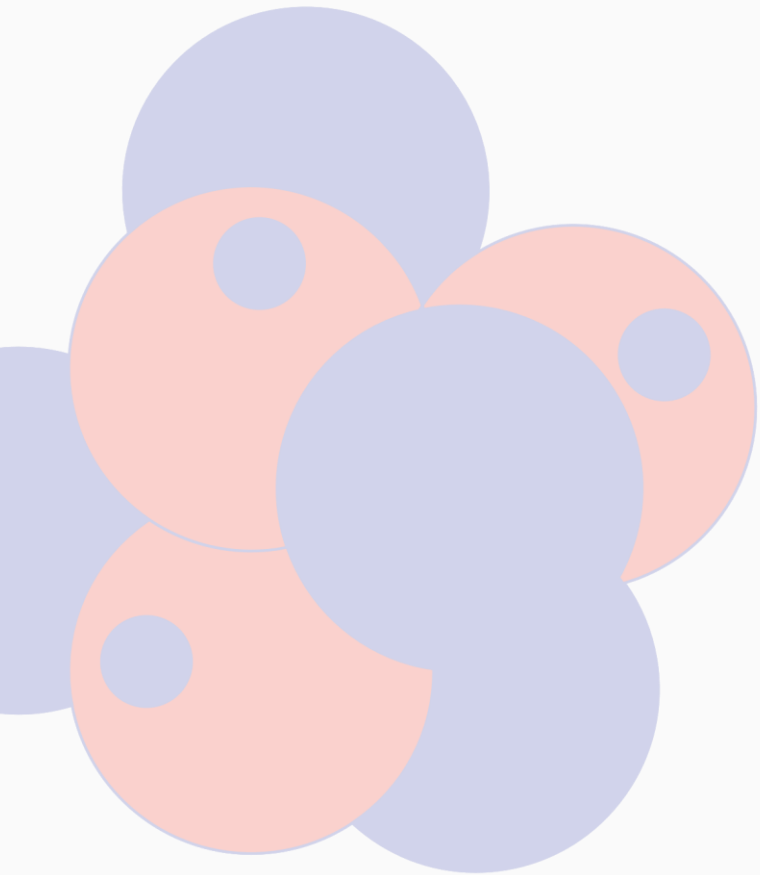
Cell-based treatments, personalized organ creation, and gene correction will become routine components of healthcare, making diseases leading to organ failure and genetic disorders easily manageable

1	0	1	0	0	1
0	0	0	1	0	0
1	0	0	0	0	0
1	1	0	0	0	0
1	1	1	0	0	1
0	0	1	1	0	1

## DATA STORAGE

Quantum data storage systems, enhanced by advanced spintronics, will revolutionize data processing, providing unprecedented efficiency and capacity for handling massive datasets





2e

8e

18e

32e

32e

18e

8

# ENERGY EQUATION

**5% OF THE WORLD'S ENERGY WILL BE GENERATED WITH A COEFFICIENT OF PERFORMANCE (COP) OF 2X, DRASTICALLY IMPROVING GLOBAL ENERGY EFFICIENCY AND REDUCING ENVIRONMENTAL IMPACT**

K

L

M

N

O

P

Q

s

s, p

s, p, d

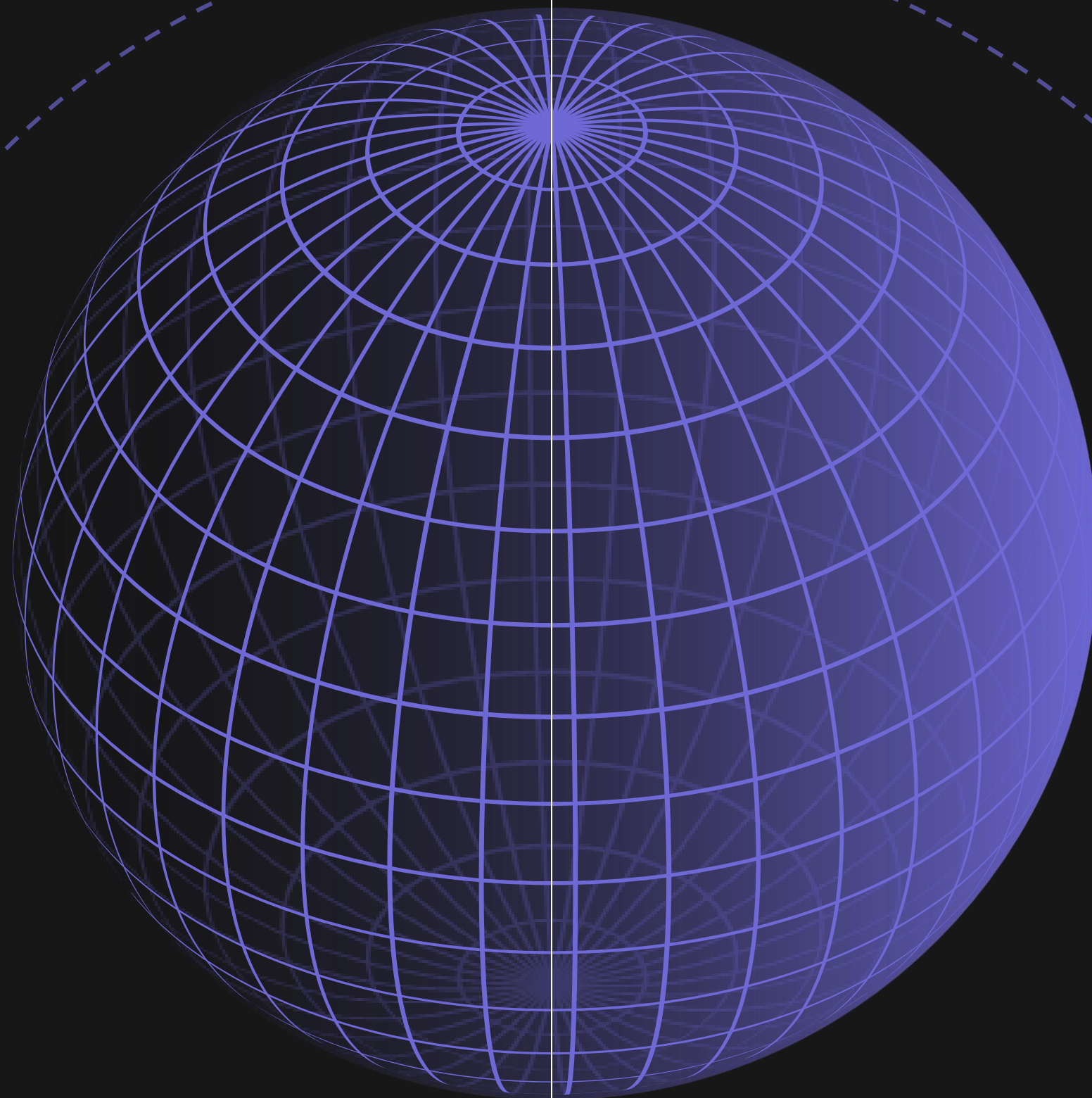
s, p, d, f

s, p, d, f

s, p, d

s

# INTERCONTINENTAL TRANSPORT



Point-to-point suborbital travel will become a premium method of transport, offering intercontinental relocation within minutes, reshaping global mobility





## The Orbit Industries

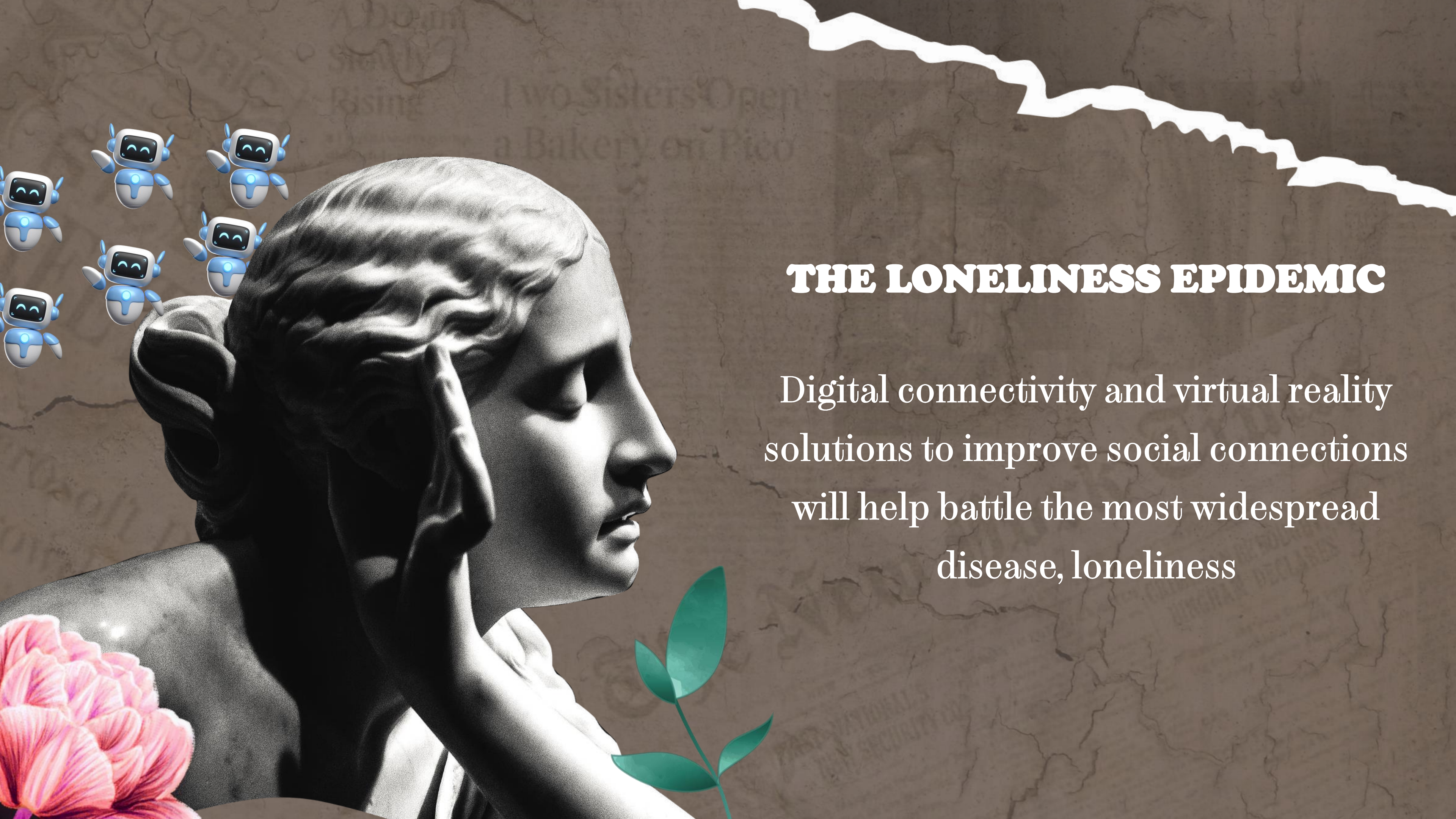
**The cost of accessing Low Earth Orbit (LEO) will decrease by 90%, enabling large-scale biomanufacturing in zero-gravity environments and opening new frontiers in industrial production**



# COMMUNICATIONS PROTOCOL

New output channels to enhance human-device interaction will emerge and will find adoption in consumer applications





## **THE LONELINESS EPIDEMIC**

Digital connectivity and virtual reality solutions to improve social connections will help battle the most widespread disease, loneliness

The background features a collage of food-related images. On the left, a large, textured leaf is shown. In the bottom left, a hand holds a bunch of white grapes. In the bottom right, a hand holds a bunch of dark grapes. The entire scene is set against a solid green background.

## BIOENGINEERED FOOD

Natural veggies will become premium food & lab-grown food will be cheaper and considered daily routine



# Hypothesizing 2050

Please feel free to reach out to us if your  
idea of the future has [in]congruences to ours

[[akhilesh@blume.vc](mailto:akhilesh@blume.vc)] 

[[sonisha@blume.vc](mailto:sonisha@blume.vc)] 